

SmartBikeWheel

PlusOne



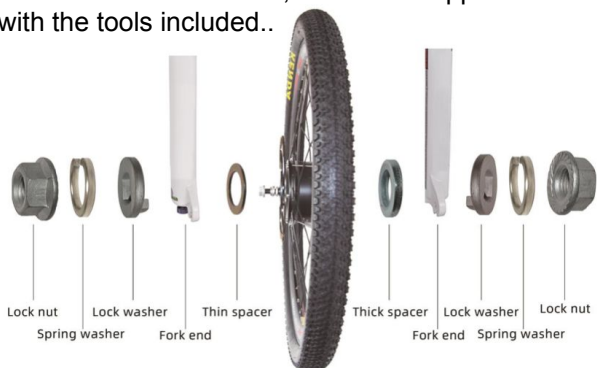
INSTALLATION GUIDE

Revision 1.1

Step 2. Prep the PlusOne Wheel

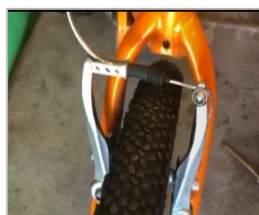
A. To simplify installation, move the nuts and washers that will be outside the forks to the ends of the axle and slide the washers that will be inside the forks close to the hub.

B. If a disc brake is needed, install the supplied brake disc with the tools included..



*The nuts and spacers were put onto the axle of the motor before packing, please rearrange the order or adjust the number of the spacers if necessary. (Note: Don't remove the lock washers and the spring washers)

Step 4. Adjust the front brake



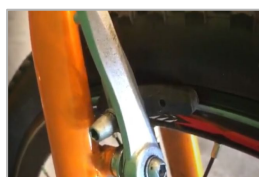
A. Flip bike over. Careful, the front will be a bit heavier with PlusOne's motor installed.

The rim and tire should be centered within the fork. If not, return to step 3B to add or remove washers to align the wheel.

B. Reconnect brakes and test to insure the brakes are working correctly.

C. Adjust brake pads as necessary. (detailed instructions for common brakes are on the reverse side of these instructions).

D. Inflate tire as needed.



Step 6. Use the App

A. Download the iOS or Android app for your device. See provided QR Codes.

B. Turn on your PlusOne by sliding the switch on the battery bottle.

C. Connect with your PlusOne

- From the main screen, tap the magnifying glass icon in the top right.
- Select your PlusOne from the list.

D. Optional: Strap the included phone mount to your handlebar tightly. Place your phone into the mount



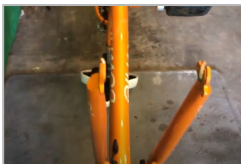
Step 1. Remove the front wheel



A. Loosen the front brake (detailed instructions for common brakes are on back of instructions)



B. Flip bike over (you may want to put paper or cardboard where the seat and handlebars will rest).



C. Remove the front wheel by loosening the nuts with the provided wrench, or pull quick release lever and rotate counter clockwise.

Step 3. Install the PlusOne Wheel



A. Orient the PlusOne motor with the cable on chain side and notch of the axle facing down (toward the handlebar). Tabs of the anti-rotate washers will be facing up.



B. Place the PlusOne wheel into the fork ends. If there is a gap between fork ends and inside washers, add supplied extra washers to the axle as needed.



C. Tighten the nuts on both sides of the wheel with provided wrench. Nuts should seat properly on fork ends. Wheel should seat squarely into fork ends and not wobble or appear loose.

Step 5. Install the PlusOne Battery Cage



A. Locate the two holes in your bike's downtube to attach the battery cage. Use the two bolts provided to attach the battery cage securely to the bike.

B. Run the cable from the battery cage up the downtube and down the front fork on the right to the PlusOne's motor connector.

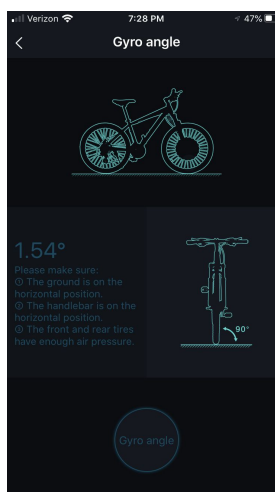


C. Align the two arrows on the cables and carefully slide the two together. DO NOT FORCE the two ends together if there is strong resistance.



D. Use the supplied cable ties to dress the cable neatly so that it the cable is snug and the forks turn freely.

Step 7. Set the Gyro Angle



Setting the Gyro angle is critical to your PlusOne functionality.

A. Tap the gear icon at the top left on the app's main screen to open the settings page.

B. With the bike on a level surface and upright tap "Gyro Angle Calibration" from the settings page

C. Tap "Set Gyro Angle"

Note: If you have rear suspension or your tires are underinflated, it's best to sit on the bike when setting the gyro.

Charging your PlusOne

PlusOne uses lithium batteries which must be occasionally charged. Unlike NiCad batteries, Lithium does not need to be fully discharged before charging.



A. To charge your PlusOne, locate the supplied charger. NOTE: for safety reasons, use only the charger supplied with PlusOne.



B. Locate the charge port under the rubber cover above the power switch near the top of the PlusOne battery.

C. Connect the USB C end of the charger into the PlusOne charge port before connecting to AC power.

The LED on the charger will be red while charging and green when PlusOne is fully charged.

A note on brakes

These instructions assume your bike's brakes were properly adjusted and operating correctly before SmartBikeWheel was installed. The rim (the metal wheel the tire fits into) may be slightly wider or narrower than the wheel you removed. Adjusting your brakes to fit SmartBikeWheel should be a simple task.

If you find your brakes need adjustment beyond these instructions, there are many resources available including these on YouTube:

V-Brakes: https://www.youtube.com/results?search_query=how+to+adjust+v+brakes

Disc-Brakes: https://www.youtube.com/results?search_query=how+to+adjust+bike+disc+brakes

Cantilever: https://www.youtube.com/results?search_query=how+to+adjust+cantilever+brakes

V-Brakes



To loosen: The arm on the left will have a bracket with a slotted opening. Squeeze the two arms together until the connecting cable slackens and remove it through the slot in the bracket. The two arms should fall away from the rim.

To Adjust pads: Most V-brakes have a slot in each brake arm where the pads attach. Adjust the height by loosening the bolts and sliding the brake shoe up or down the slot until the pad is aligned with the rim. Re-tighten the bolts.

Disc Brakes



To loosen: Find both of the hex bolts that hold the brake caliper to the frame. Insert an Allen wrench of the corresponding size and twist it a half turn or more counter-clockwise.

To Adjust: With the mounting hex bolts loose, squeeze the front brake lever 2 or 3 times and hold. This will center the brake on the disc. Tighten the two mounting bolts you loosened earlier with your other hand.

Cantilever brakes



To loosen: The arm on your left will have a slotted opening. Squeeze the two arms together until the connecting cable slackens and remove it through the slot. The two arms should fall away from the rim.

To Adjust pads: Most cantilever brakes have a slot in each brake arm where the pads attach. Adjust the height by loosening the bolts and sliding the brake shoe up or down the slot until the pad is aligned with the rim. Re-tighten the bolts.

Adjusting brake drag and play



Regardless of the type of brake used, the brake pads should not drag against the rim and squeezing the lever should activate the brakes quickly.

Both of these functions are adjusted at the brake lever on the handlebar. Locate the lock ring and the adjusting barrel on your front brake lever.

Loosen the lock ring by turning it by hand counter-clockwise. Adjust the barrel in to remove dragging or out to reduce play.

And now a word about SAFETY

For your safety, please read the safety instructions below carefully.

- Obey all local bike and electric bike rules
- Check that the brakes are working correctly before riding. **DO NOT RIDE YOUR BIKE IF THE BRAKES ARE NOT WORKING CORRECTLY.**
- Always wear a helmet when operating the bike.
- Verify that the Gyro angle is correctly set before operating the bike
- If setting the weight of the bike and rider use the actual weight, do not set the weights higher than the actual weights.
- Do not abuse your PlusOne by leaving it out in the rain, direct sunlight or perform stunts that could damage your PlusOne